

Concert Band Ideas

* Remodeling the band room -

- Paint Cubbies - Inside Black
- outside Red

- move Cubbies

- take music out of shelving and
move the shelving unit

S & E - Put all music on rack that can move
- keep music in magazine holders!! on cart! to like Lysen

Pep Band Music - Put all music on a cart-like + Wamie
S & E music - For starters, put all S & E music
on cart - to be able to move easily

- Catalog all music in band room -

Suspenders for marching
Pants!!!

Christmas Concert -

Need to order

- * - Carol of the Bells
- * Bill Calhoun

Good concert
Closes

* - Jingle Bells Forever

ideas
Silent Night
- David Shaffer

* - Carol of the Bells
Bill Calhoun

* - Silent Night

* In the Bleak Midwinter

- Gustav Holst arr. Robert W. Smith

* Greensleeves - Alfred Reed

* Ring the Bells on Christmas Day
- Ed Huckeby

Jazz
Paula Cook Yule & w/ Hank if
Santa Claus is Comin' to Town

* Imani "Faith", A Kwanzaa Celebration
- Sean O'Loughlin

* Emmanuel Variants
- Robert E. Foster

* Symphonic Prelude on Adeste Fidelis
- Claude T. Smith

* White Christmas
- Irving Berlin

* Sleigh Ride
- Leroy Anderson

377-613-7170 - on track student travel
 20 + 44 = 64 = 15 seats / 3 free / 8 chaperones
 [57 on a bus]

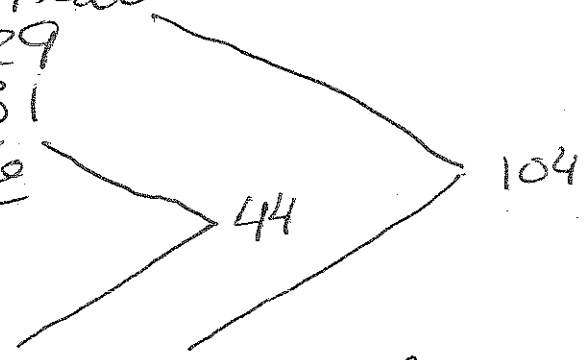
1 day drive
 2nd day - on stage live
 3rd day - silver dollar
 Titanic?

Band/Choir Trip - 2012

Choir
 O Chair

Mr. [Name] Next Year -

- 7th Grade - 29
- 8th Grade - 31
- 9th Grade - 16
- 10th Grade - 15
- 11th Grade - 9
- 12th Grade - 4



2 Shows -

Out Guide
 - Yes -
 Handle tickets
 and meals
 with us the whole
 time!

4 Day - 3 Night

*Dishes?

- Busses - To St. Louis - See arch and play - go up
 something else during the day...
 in arch
 To Branson - On stage - Perform,
 clinic, Watch show
 4 Night

#1 free adult
 per every 20
 paying students.
 Based on 80 students
 - 4 free

T 20% won't go

7 & 8 - 1-5 Ratio @ 18 students
 High School - 1-8 @ 36 - 17 chaperones
 - about 9 chaperones

lose 4
 4-6 seats
 to bunk a
 dinner
 Bus - 57
 49
 36
 I have
 meet new

* about 93 people total

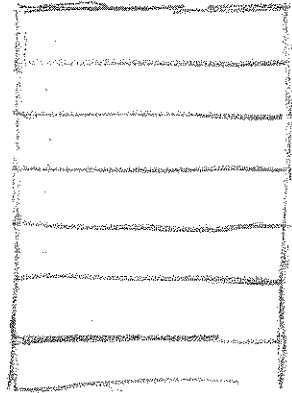
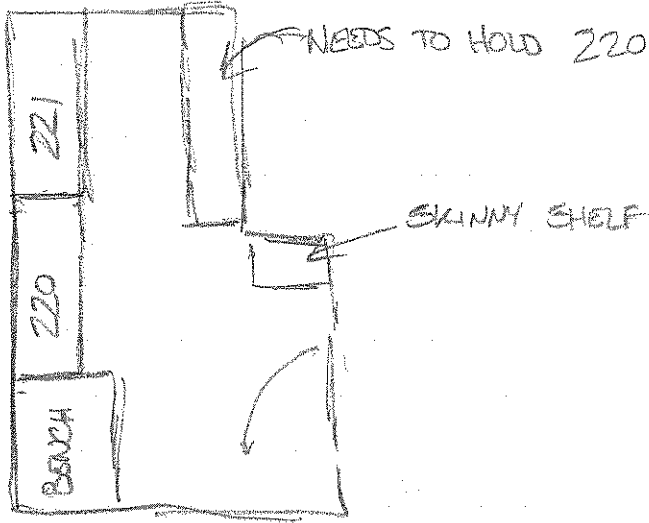
2011
 Pricing

* Branson on stage live - 50 theatres

Mark
 Fillback
 608-929-4513

44 possible
 in band
 20 in just choir
 (64)

MUSIC LIBRARY



PLAN VIEW:

Concert Band / Concert Choir Awards

* 608-798-1222

* 608-220-7610 - Cellular

- Ordered 25 Band Letters
- Ordered 4 Chenille Patches

~~2.38~~ - 2.38 \times 100 Band-

Band Letter Junior Year (2 Years in Band)

Pins - 1 Year - 40
2 Year - 35
3 Year - 20
4 Year - 15

Senior Year - 3 Big Awards and others
if I feel it is necessary.

Box - Box 25 - 86¢ - 21.50 6 Boxes \$1.29

Band/choir - 100 - \$2.38 \$238

50 Band/50 choir

Flute -

\$395.56

2nd Flute
A-F 2nd - Choir
J-C 2nd - Soprano
M-C 2nd - Alto
G-P 2nd - Tenor
L-T
JG - Bass
M - Trombone

Drive 14 VR Schools

- Saturday of the pre-up for parties

Performing groups

* Phi Mu

* Jazz Combo 012

* Jazz Ensemble

* Ensemble Nevada

* Percussion Ensemble

* Brass Ensemble

60 days

- Contact - 1071 - Kate Eulo

99.3 - Radio from Dodgeville

- Ken Killian quartet - Free

- Cousins for food to sell

- Text message to the people who don't show up
for parties

- Kids need to say

Lori Vette -
-608-935 2766

Memphis Trip

- * Final Payment due 60 days before departure.
- * Trip Deposit to be set in August sometime.
- * Needs date for Pasty Sale and Drive 14 UP School Event - Let Fillback Todd know the date!!

How many seats on a bus? 55 People on bus
Check should be made out to? Dodgeville Travel
September 12 - Mandatory trip and fundraiser meeting - John can't be there - Another date?

No St. Jude's - have to be 16...
? New Date

~~September 12 - Meeting~~

- Trip Discussion
- Music Parents Discussion (quick) - Need officers more involvement
- Pasty Fundraiser - Run as normal - Friday + Saturday along w/ AK/US
- Drive One 4 UP School 5 - Require each student to get 5 people to drive at event. One person/address must be 18 to participate!!! Must contact me to sign up for a time to drive. Will run from 8am-4pm.

Contract - send payment with it?

Twigger

Concert Band - Literatur

21 guns

Adele - Rolling in the Deep
Easy - 10299425

DYNAMITE
Her soul sister

Bella's Lullaby -
Easy - 10063366

Grease! -
Medium Easy - 2385011

(Ali found these)

Symphonic Band - What's Up at the Symphony, River of Ancestors
Man in the Mirror - Jazz Band
21 Guns, Dark Knight Suite, The Hunger Games,
Music for a Darkened Theater

Memorial Day Ceremony -
- God Bless the USA
- Military Medley
- Grand Old Flag

What's up at the
Symphony

Where No Man Has Gone Before, Looney Tunes,

Pop Culture - Robert Sheldon ← Stars & Stripes

10032473

Dark Knight Suite
- 10058271

Looney Tunes Overture - 2050920

Dark Knight Suite - 10058271

Blue Tango -

Funiculi, Funicula

Pops Concert 2013 (March)

Symphonic Band -

1. Where No Man Has Gone Before
2. Looney Tunes Overture
2050920
3. Dark Knight Suite
10058271

Ww Choir?

Brass Choir?

Concert Band -

1. Adele - Rolling in the Deep
10299426
 2. Bella's Lullaby
10063366
 3. Grease - ME
2385011
- Ww & Brass Choir?
4. Pep Band Song

Spring Concert

1. A Festival Prelude
Reed
2. Hosts of Freedom
3. Blessed Are They
4. Into the Clouds #10033519
5. Kirkpatrick Fanfare -

- Amparita Proca
- All Glory Told - Tpt Solo
- Shenandoah
- In all its Glory - Long
- American Overture

1. Hosts of Freedom
- 2.
3. A Festival Prelude #81901
4. Kirkpatrick Fanfare #2700327

- *Pomp + Circumstance - Fanfare + Reces
- arr - Plyhar - 75515 [65.00]
- *Back + Before for Band
- *Watkins - Farnum A+B
- *Iowa Test for Music Lit.

Fate of Gods - 2469112

Improving CHS Band Program + Room

- Clean out back room - Build tuba Shelf
- Tuners for each practice room + system for storing them
- Organize music library - Concert + S + E
(S + E Distribution process)
- Music Organizing System 46 slots
- Music Library System